



## January 2024 Bulletin

### Welcome

Welcome to a wet but mild 2024 so far. If last year's weather pattern happens again it should dry up soon - fingers crossed.

We recently e-mailed all members with their contact and trading details from 2023. If you missed it, or have changes, please get in touch so that the information we hold on your business is as accurate as possible.

The accounts for 2024 will be available very soon and the Handbook should be posted this week. Our AGM will be a breakfast meeting with bacon rolls on Wednesday 13th March at 10am in the Green Hotel, Kinross.

We have a very varied bulletin this month - if there is anything you would like to see in future bulletins then please send it in.

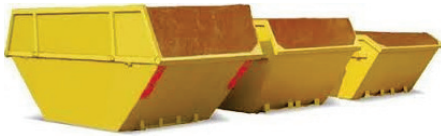
***Ring the Ring for Anything***

Send us an e-mail



## Second Hand Potato Boxes

We have a member who is looking to sell 150 used potato boxes. The member is looking for £15 ONO per box. If you would like more information, please call the office on 01577 830616.



## Long Term Skip Hire

Please note that all skips that are booked going forward will have a maximum free on site time of 5 weeks - after this time they will attract a rental charge. If you know its going to be on site for more than 5 weeks please ask for more information on the charges.



## Flooring

450 of 18mm Tongue and Groove Sterling Board (8ft x 4ft Sheets) are available.

£15.00/sheet for small quantities or price is negotiable for large quantities.

If interested, please contact Tayforth for more information.



## Mobile Wood Processing

After the recent storms do you have tree limbs that have come down and so need them cut into usable logs for your fires? We have a member who has a mobile firewood processor who can cut and split the wood into pieces suitable for your log burners & open fires. There is a 10% discount on the hourly rate for Tayforth

members.

Logs can be piled up or filled into crates at ease with the use of a conveyor. All you need to supply is the power source.



## Potato Land Wanted

We have members who would be interested to hear from you if you would consider renting out some of your land for growing potatoes.

All areas are considered so please get in touch if you would like more information and discuss further.



## Grazing Wanted

Tayforth has a member who is looking for a seasonal grass let from March to October for approximately 25 heifers and 1 bull in the North East Fife area. If you have a field that may be suitable, please ring us on 01557 830616.



## Pallets Available

We have a member with approx. 120 pallets in very good condition available near Leven – Free! If you are interested, please contact the office for more details





## Compost Available

Are you needing any compost?

If so, we have a member with a few hundred tonnes of screened green compost available. This can be uplifted in the Perthshire area or delivered – we can arrange haulage.

Please call the office more information.



## Helping Local Good Causes

SRUC OWLS society were generously awarded £1000 by Tayforth Machinery Ring.

OWLS, which stands for the Organisation for the Welbeing of Learners, is a student led society based in SRUC's Elmwood Campus and supports students with their mental health by organising peer to peer meetings, small trips and animal related talks from speakers.

Tayforth is very keen to support good causes, especially rural groups.



## Solway Lambing Pens

Get ready for this year's lambing season with Solway Lambing Pens.

The easy to clean, sustainable pens come in Standard, Intermediate and Deluxe sizes and come as a single row or back to backs.

There are also Lamb adopters, warming boxes and hay racks available for all your lambing requirements. Contact Tayforth for prices.



RHET Fife is indebted to Tayforth Machinery Ring for their support over the years, and their support in the coming year.

Tayforth's support has allowed RHET Fife to bring many school learners onto farms and to farming education events over the years. RHET Fife has a large number of volunteers who provide venues, and schools are eager for farm visits, but Tayforth provides crucial funding for transportation to allow this to happen.

In the last academic year, RHET Fife facilitated 81 farm visits and 70 classroom talks, reaching over 4,000 pupils and teachers/parents.

This educational impact would not be possible without the help of Tayforth and other supporters who volunteer throughout the year.

It's fantastic that partnerships like the one between RHET Fife and Tayforth allow for such hands-on agricultural education experiences for children. Providing those real-world interactions and connections seems invaluable.

We are always in need of more farm hosts, classroom speakers and stewards for events, if anyone is interested in volunteering with RHET or would like to know more, please contact Carole Brunton: [fife@rhet.org.uk](mailto:fife@rhet.org.uk) or Angela Mill [angelam@rhet.org.uk](mailto:angelam@rhet.org.uk)



# **GRAHAM**

**FIRE PROTECTION**



**"protecting your business"**

**SCOTLAND'S TRUSTED FIRE PROTECTION COMPANY**

**Fire Risk Assessments & Consultancy**

**Fire Extinguisher Servicing & Safety Signage**

**Fire Marshall & Staff Fire Awareness Training**

**Fire hydrants, Dampers &  
Dry Risers Servicing**



**Contact us for advice,  
or for a free survey or quotation**

**01250 833104**

**info@grahamfireprotection.com**

**www.grahamfireprotection.com**

**A PROFESSIONAL, RELIABLE AND  
WELL-ESTABLISHED, FAMILY RUN COMPANY**